

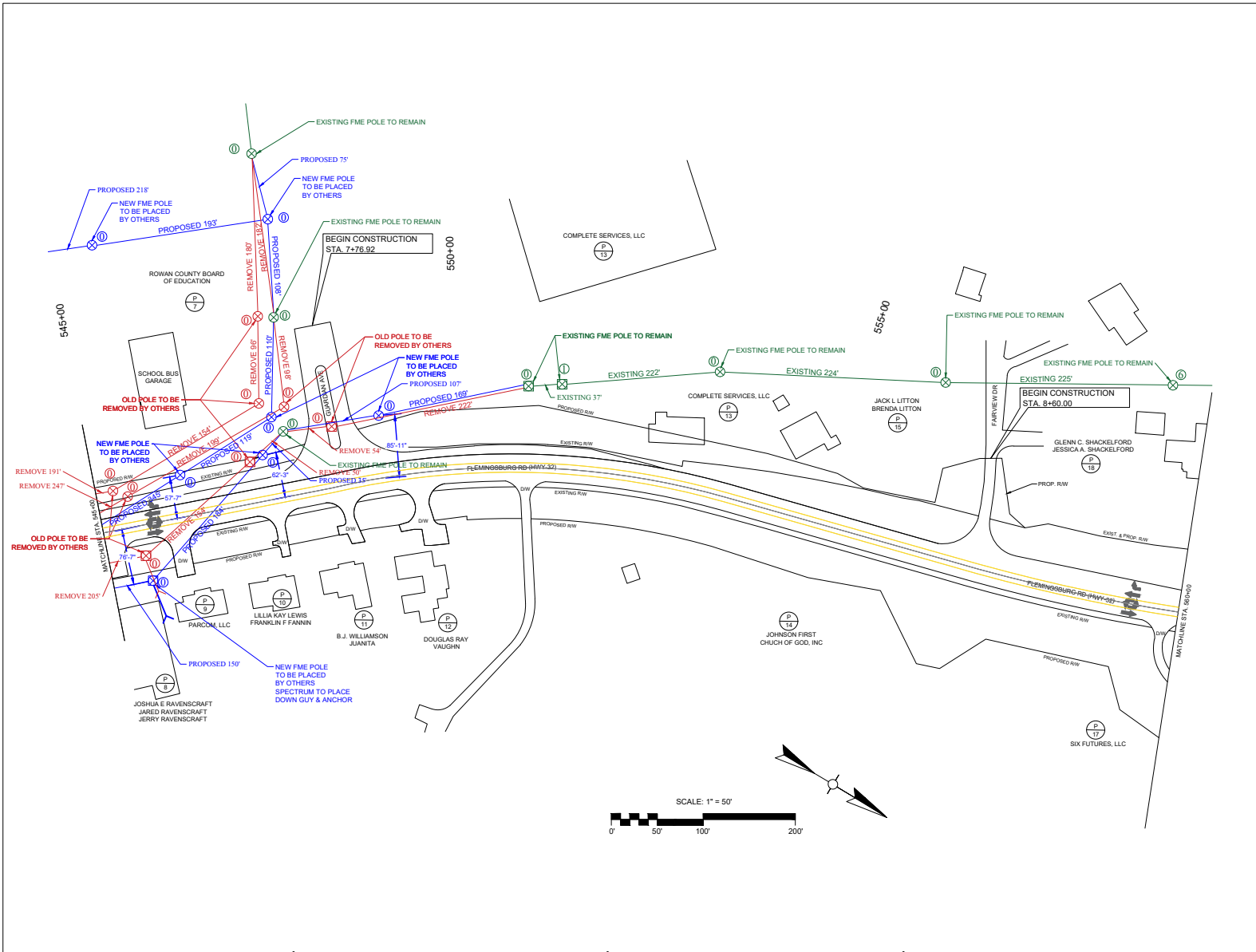
REV	BY	DATE	DESCRIPTION



MOUNTAIN LTD.
 52 Farm View Drive, Suite 201,
 New Gloucester, ME 04260
 T-207-482-7691

www.mountainltd.com

DRAWN BY:	PROPOSED SPECTRUM AERIAL RELOCATION AT HWY-32			
CHECKED BY:	STA. 535+62.27 TO STA. 665+00 MOREHEAD, ROWAN COUNTY, KY			
DATE:	DES. NO.	OPS PROJECT #	SHEET:	SCALE:
08/29/2025			01 OF 09	1:50

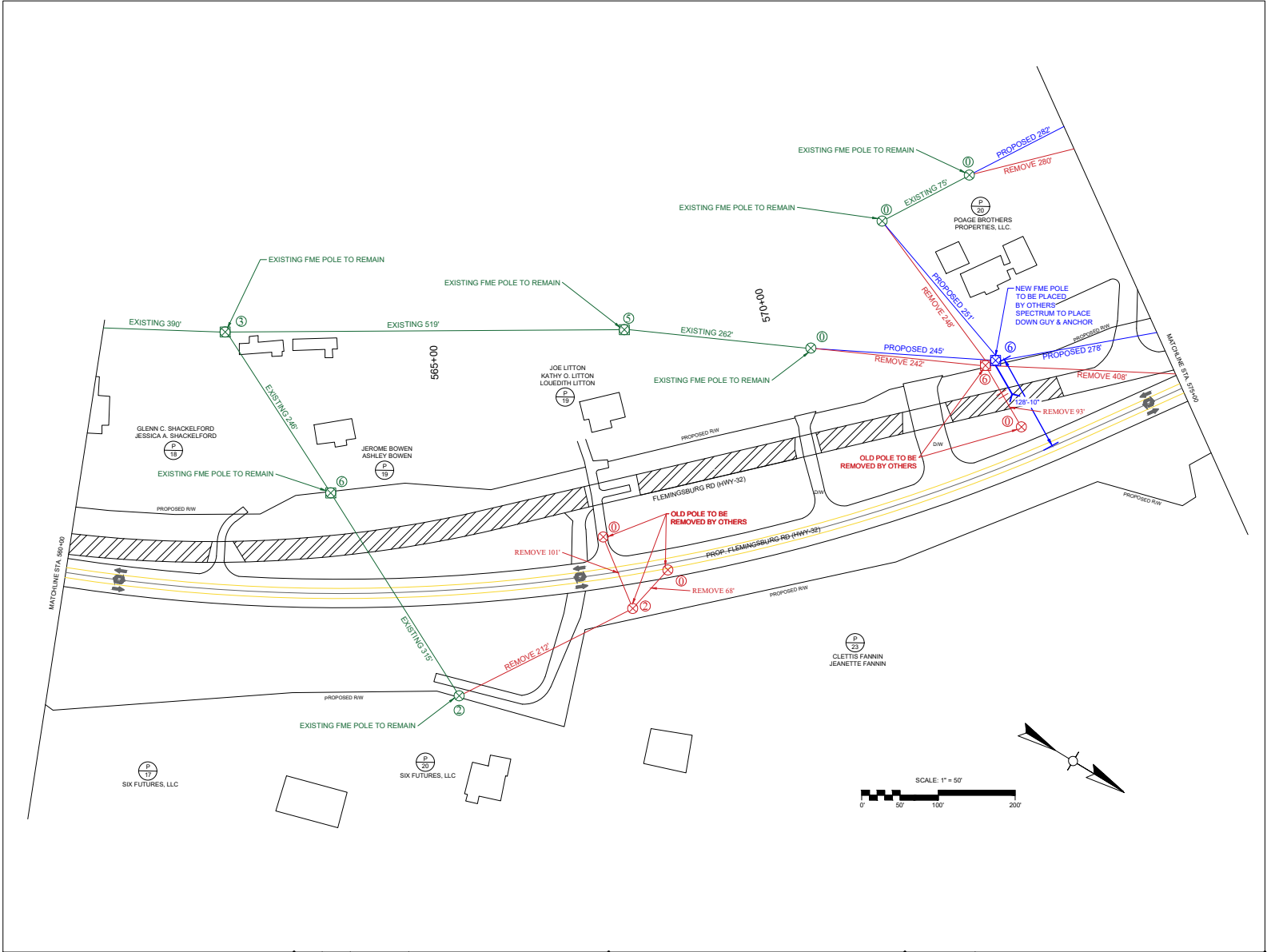


REV.	BY:	DATE:	DESCRIPTION:



MOUNTAIN LTD.
 52 Farm View Drive, Suite 201,
 New Gloucester, ME 04260
 T- 207-482-7691

DRAWN BY:	PROPOSED SPECTRUM AERIAL RELOCATION AT HWY-32			
CHECKED BY:	STA. 535+62.27 TO STA. 665+00 MOREHEAD, ROWAN COUNTY, KY			
DATE: 08/29/2025	DES. NO.	OPS PROJECT #	SHEET: 02 OF 09	SCALE: 1:50



REV.	BY:	DATE:	DESCRIPTION:

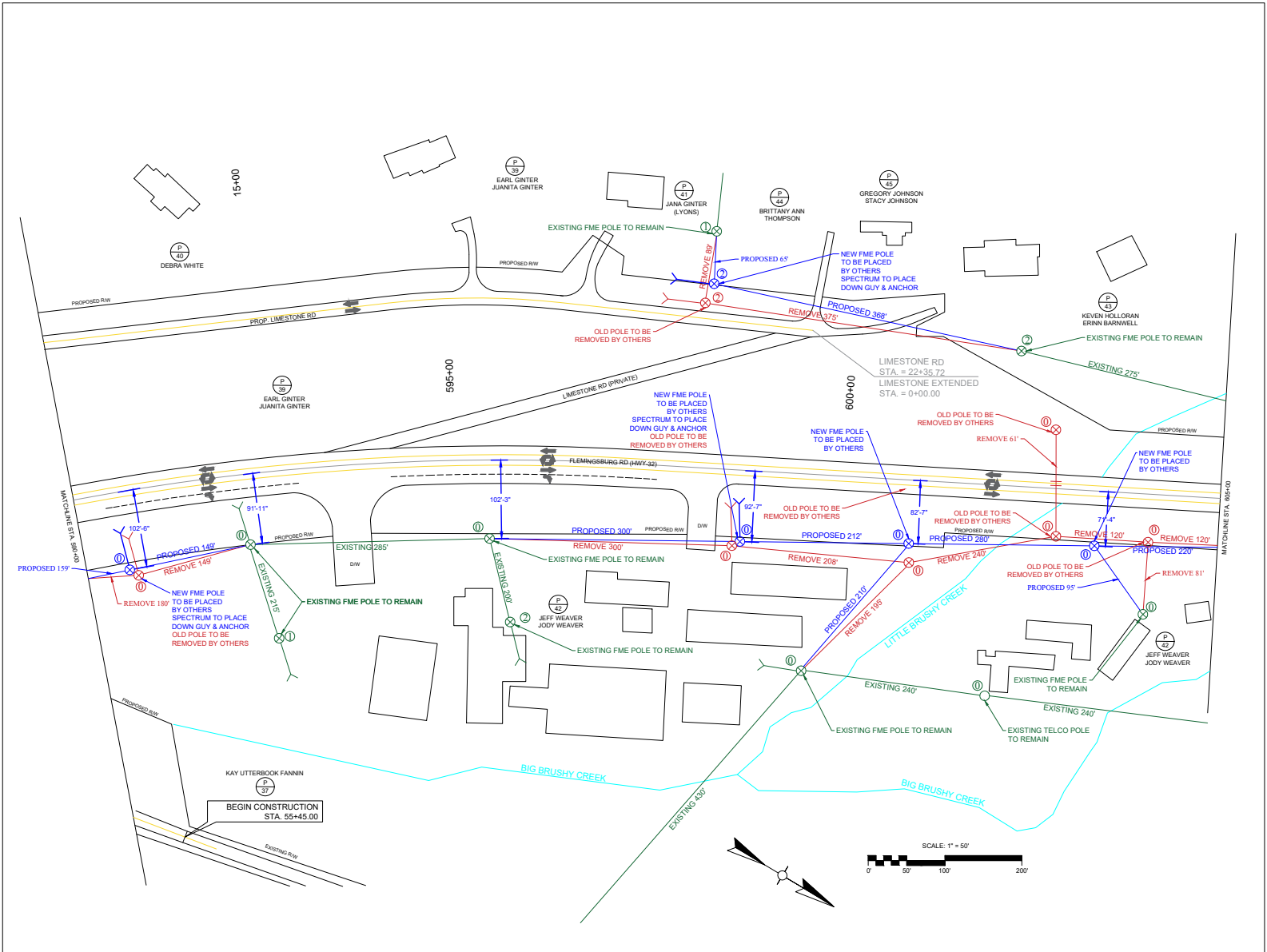


MOUNTAIN LTD.
 52 Farm View Drive, Suite 201,
 New Gloucester, ME 04260
 T-207-482-7691

DRAWN BY:
 CHECKED BY:
 DATE:
 08/29/2025

PROPOSED SPECTRUM AERIAL RELOCATION
 AT HWY-32
 STA. 535+62.27 TO STA. 665+00
 MOREHEAD, ROWAN COUNTY, KY

DES. NO. OPS PROJECT # SHEET: 03 OF 09 SCALE: 1:50

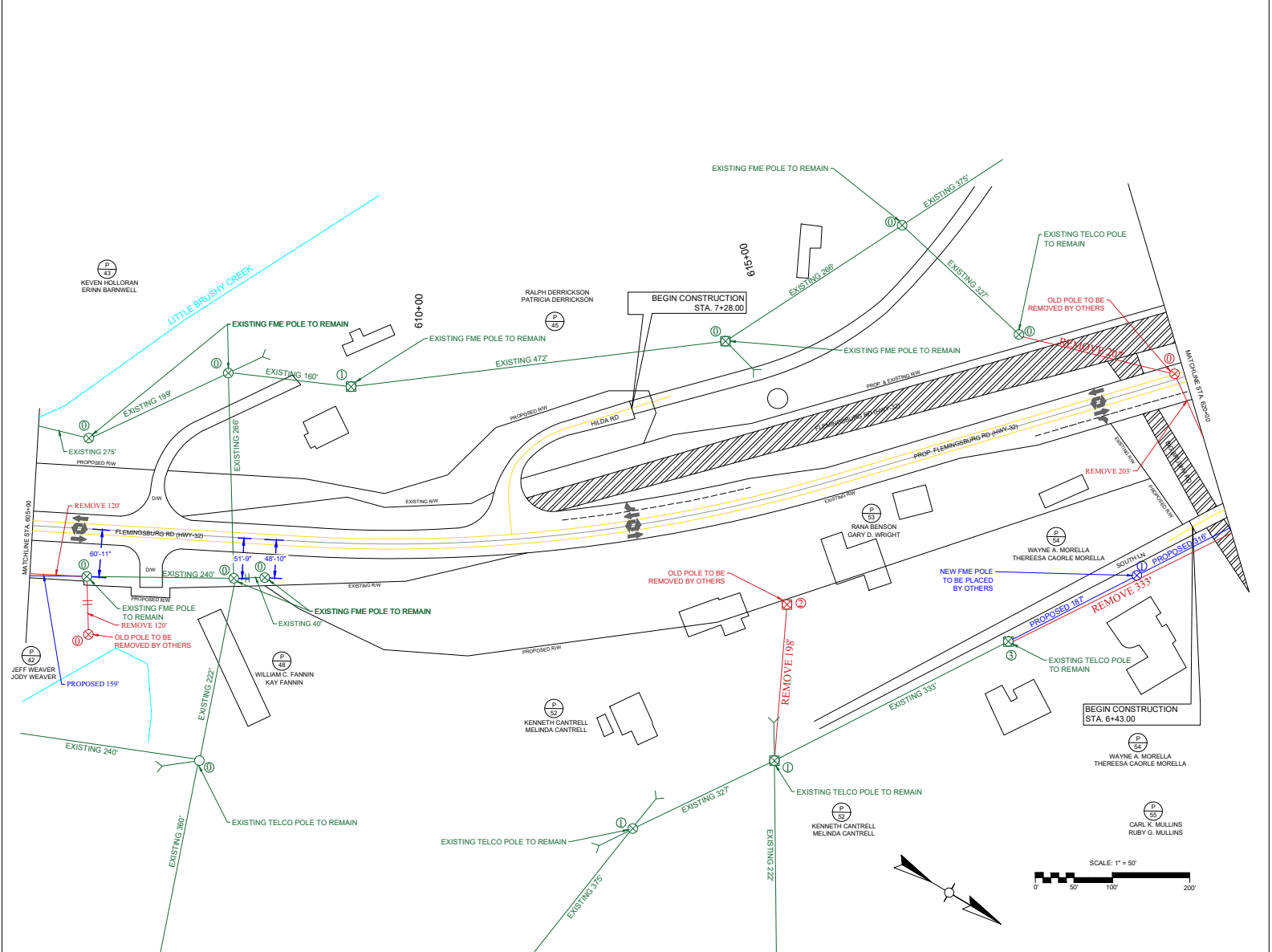


REV.	BY:	DATE:	DESCRIPTION:



MOUNTAIN LTD.
 52 Farm View Drive, Suite 201,
 New Gloucester, ME 04260
 T- 207-482-7691

DRAWN BY:		PROPOSED SPECTRUM AERIAL RELOCATION AT HWY-32			
CHECKED BY:		STA. 535+62.27 TO STA. 665+00 MOREHEAD, ROWAN COUNTY, KY			
DATE:	DES. NO.	OPS PROJECT #	SHEET:	SCALE:	
08/29/2025			05 OF 09	1:50	

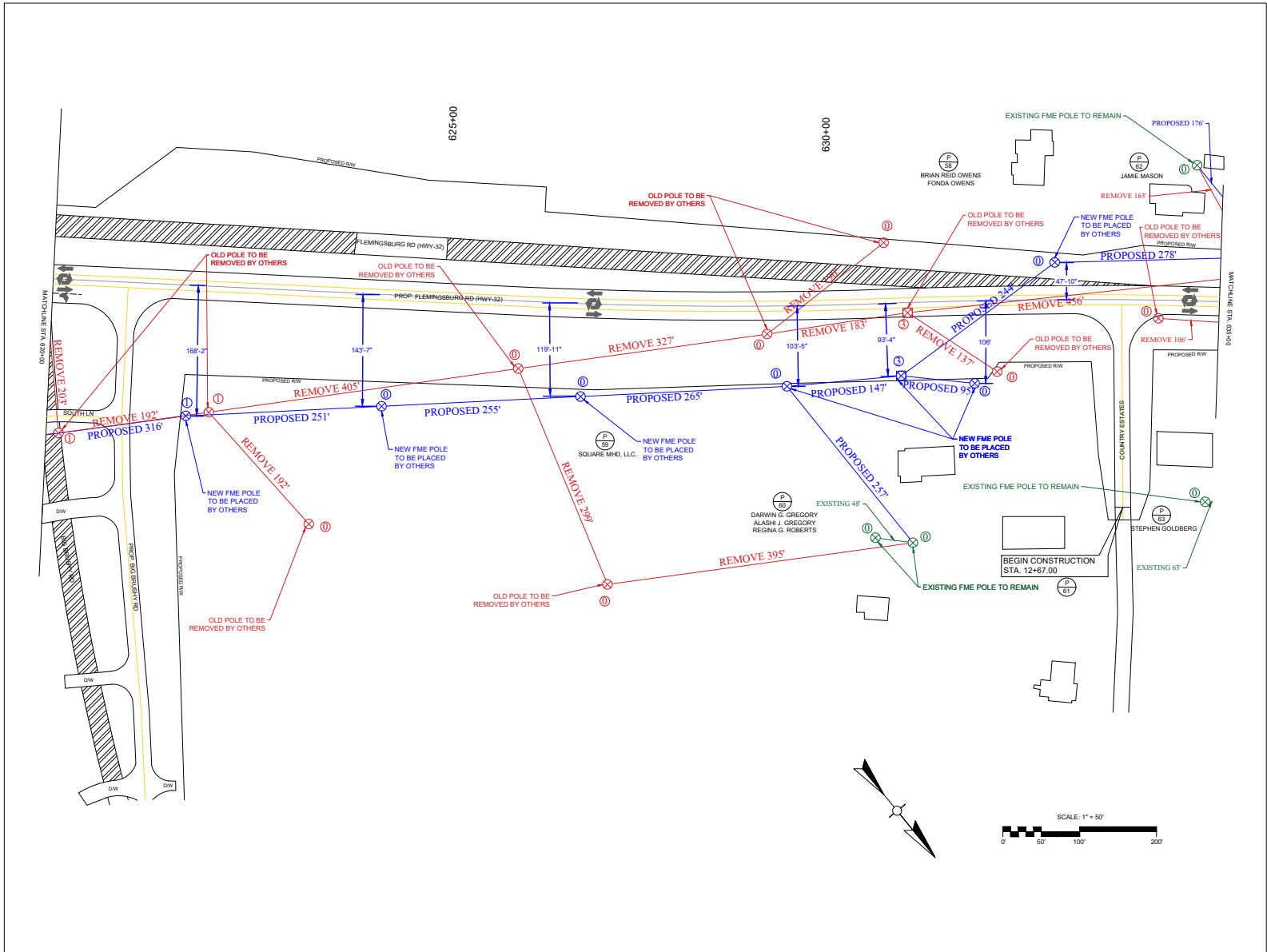


REV.	BY:	DATE:	DESCRIPTION:



MOUNTAIN LTD.
 52 Farm View Drive, Suite 201,
 New Gloucester, ME 04260
 T- 207-482-7691

DRAWN BY:		PROPOSED SPECTRUM AERIAL RELOCATION AT HWY-32			
CHECKED BY:		STA. 535+62.27 TO STA. 665+00 MOREHEAD, ROWAN COUNTY, KY			
DATE:	DES. NO.	OPS PROJECT #	SHEET:	SCALE:	
08/29/2025			06 OF 09	1:50	

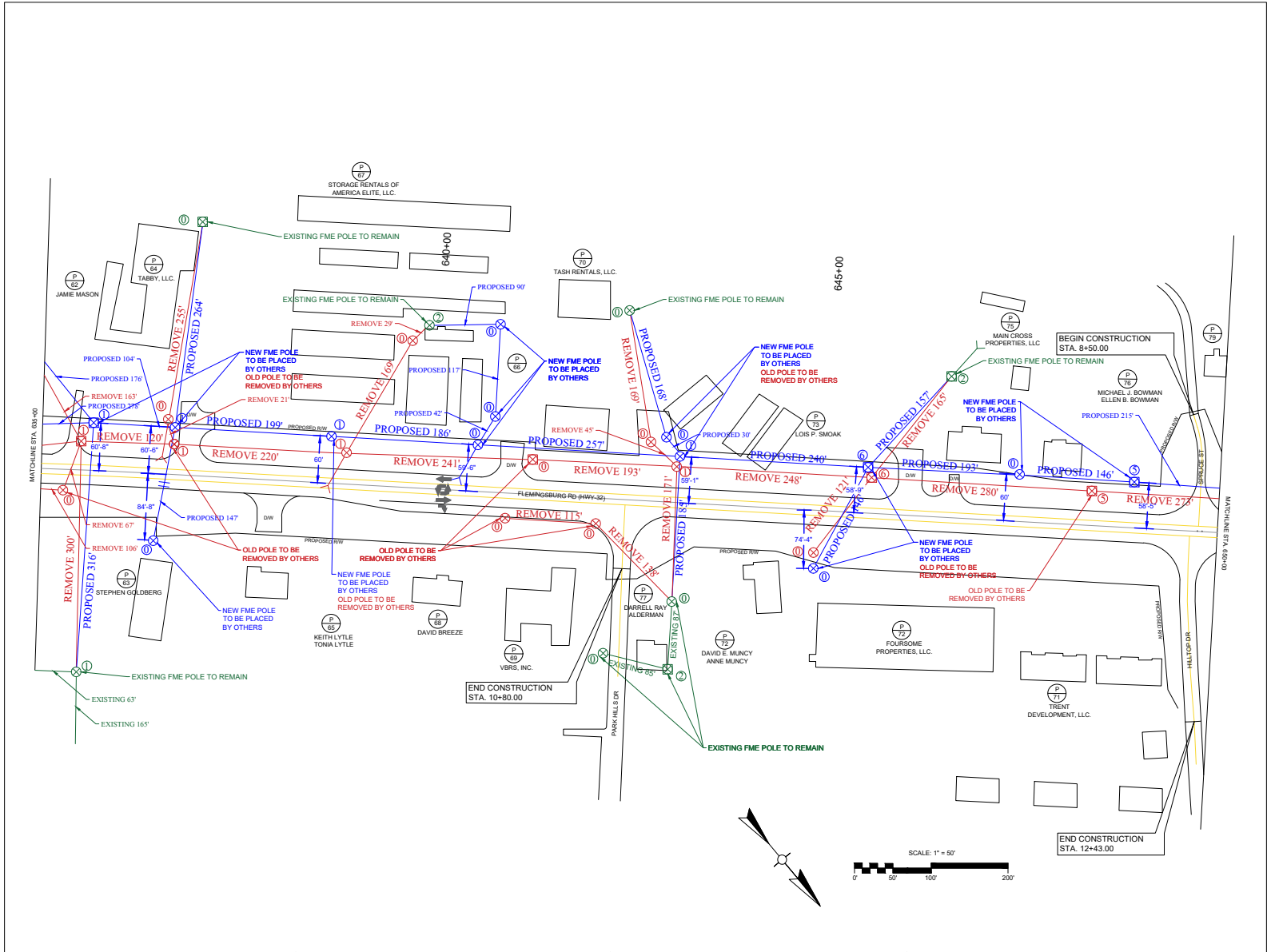


REV:	BY:	DATE:	DESCRIPTION:



MOUNTAIN LTD.
 52 Farm View Drive, Suite 201,
 New Gloucester, ME 04260
 T- 207-482-7691

DRAWN BY:	PROPOSED SPECTRUM AERIAL RELOCATION AT HWY-32				
CHECKED BY:	STA. 535+62.27 TO STA. 665+00 MOREHEAD, ROWAN COUNTY, KY				
DATE:	DES. NO.	OPS PROJECT #	SHEET:	SCALE:	
08/29/2025			07 OF 09	1:50	



REV.	BY:	DATE:	DESCRIPTION:

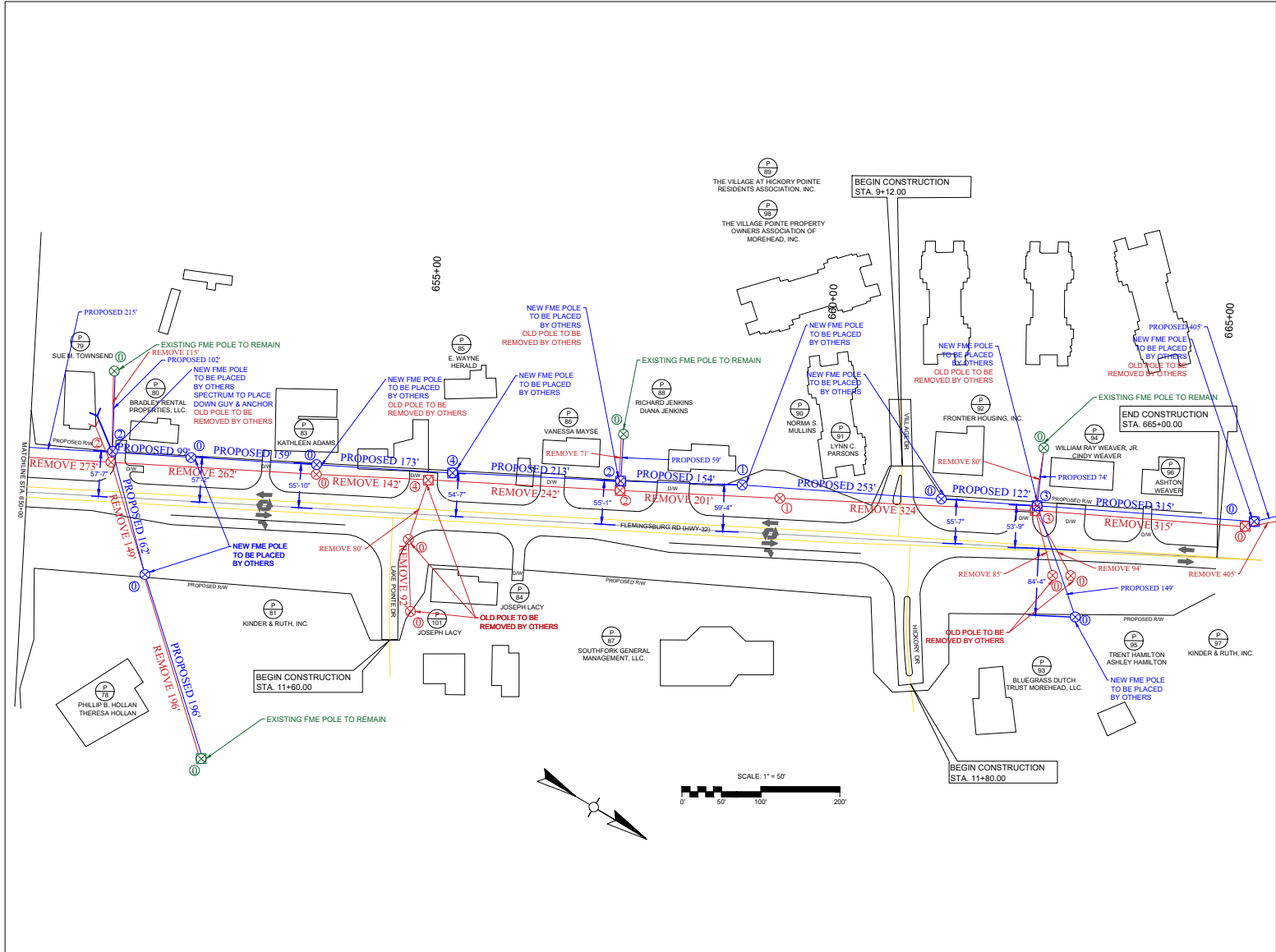


MOUNTAIN LTD.
 52 Farm View Drive, Suite 201,
 New Gloucester, ME 04260
 T- 207-482-7691

DRAWN BY:
 CHECKED BY:
 DATE:
 08/29/2025

PROPOSED SPECTRUM AERIAL RELOCATION
 AT HWY-32
 STA. 535+62.27 TO STA. 665+00
 MOREHEAD, ROWAN COUNTY, KY

DES. NO.	OPS PROJECT #	SHEET: 08 OF 09	SCALE: 1:50
----------	---------------	--------------------	----------------

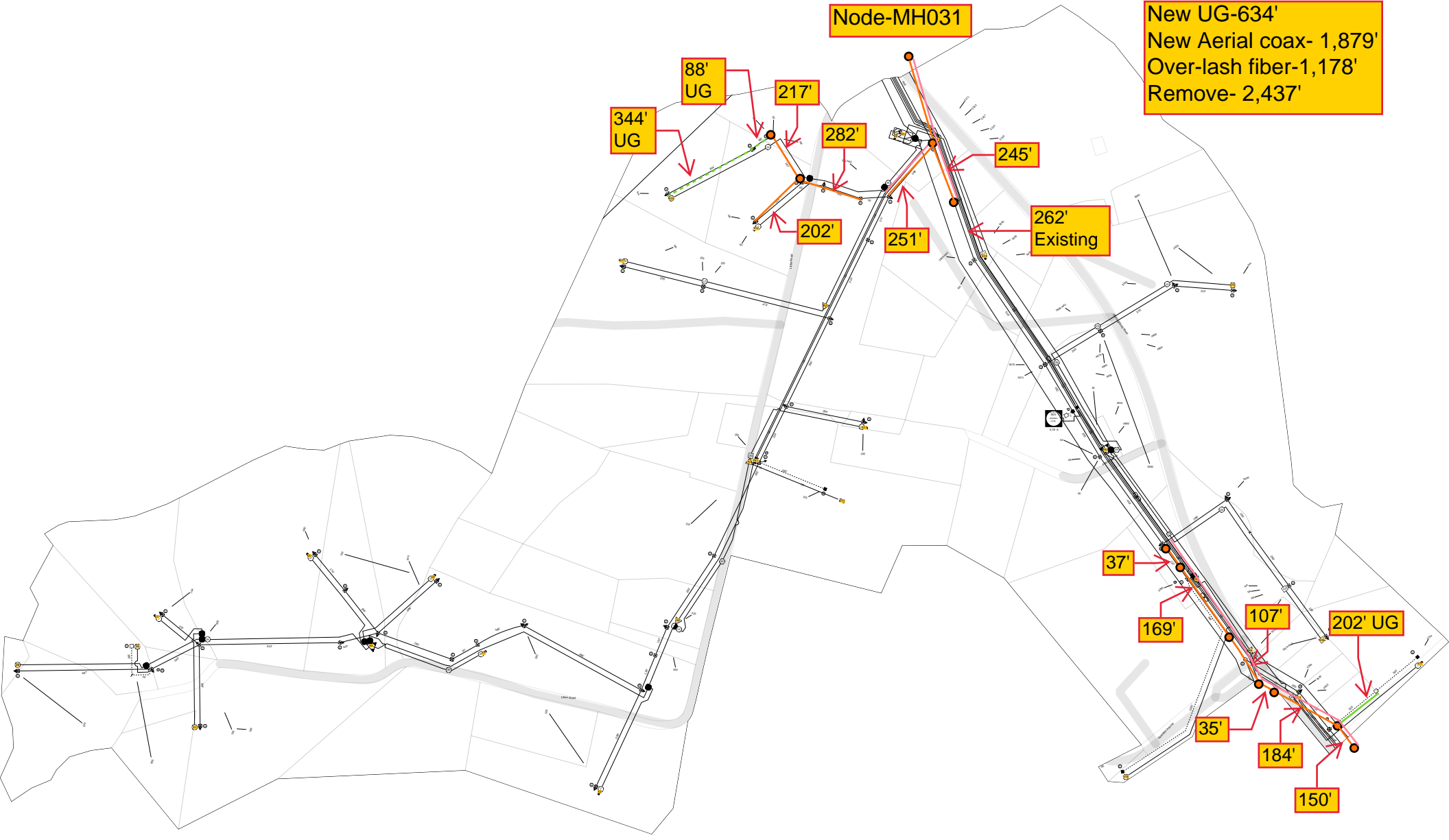


REV:	BY:	DATE:	DESCRIPTION:



MOUNTAIN LTD.
 52 Farm View Drive, Suite 201,
 New Gloucester, ME 04260
 T- 207-482-7691

DRAWN BY:	PROPOSED SPECTRUM AERIAL RELOCATION AT HWY-32			
CHECKED BY:	STA. 535+62.27 TO STA. 665+00 MOREHEAD, ROWAN COUNTY, KY			
DATE:	DES. NO.	OPS PROJECT #	SHEET:	SCALE:
08/29/2025			09 OF 09	1:50



Node-MH031

New UG-634'
New Aerial coax- 1,879'
Over-lash fiber-1,178'
Remove- 2,437'

344'
UG

88'
UG

217'

282'

245'

262'
Existing

202'

251'

37'

169'

107'

202' UG

35'

184'

150'

New Aerial coax- 941'
Over-lash fiber- 941'
Remove- 1,098'

150'

120'

183'

180'

187'

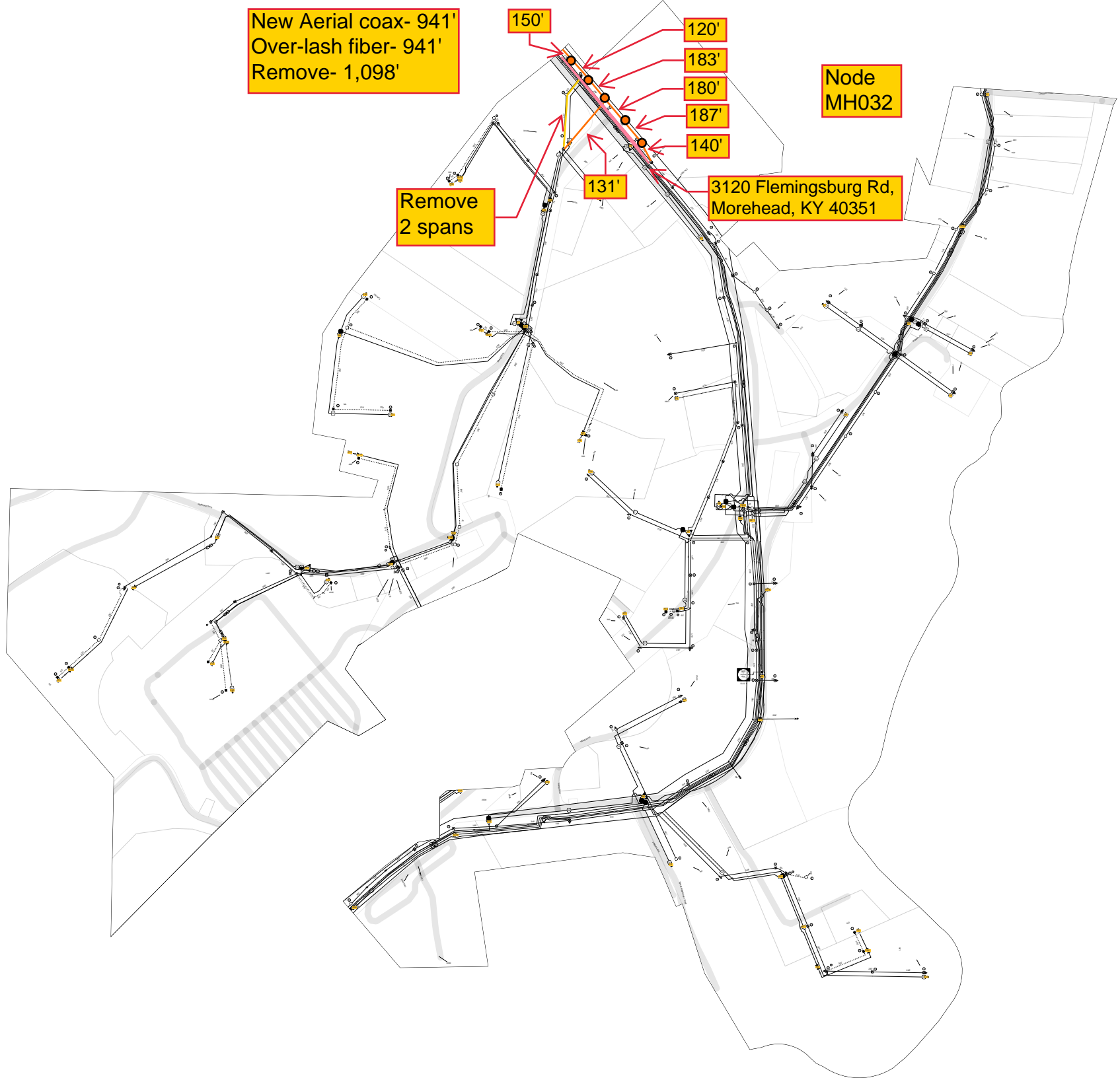
140'

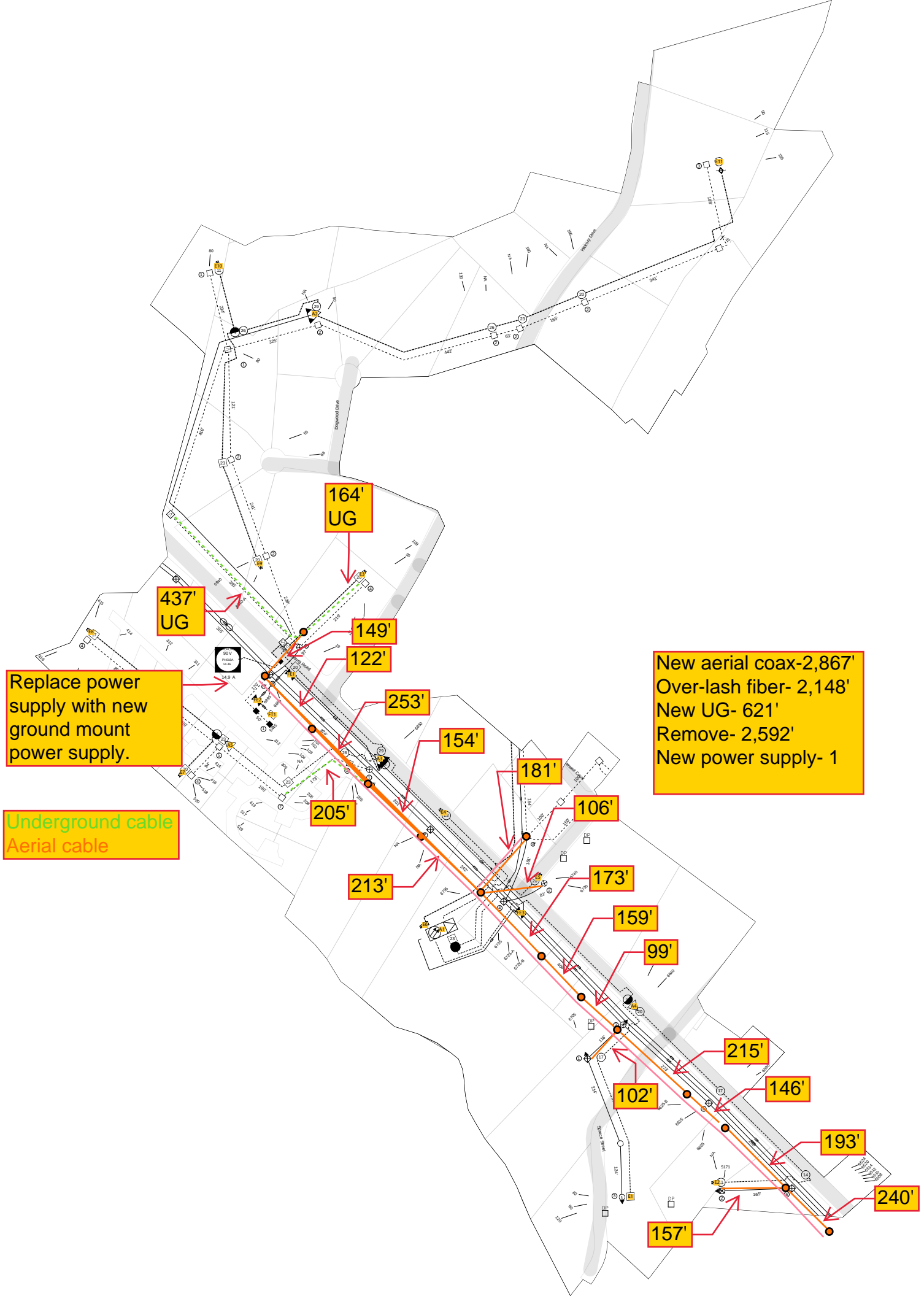
Node
MH032

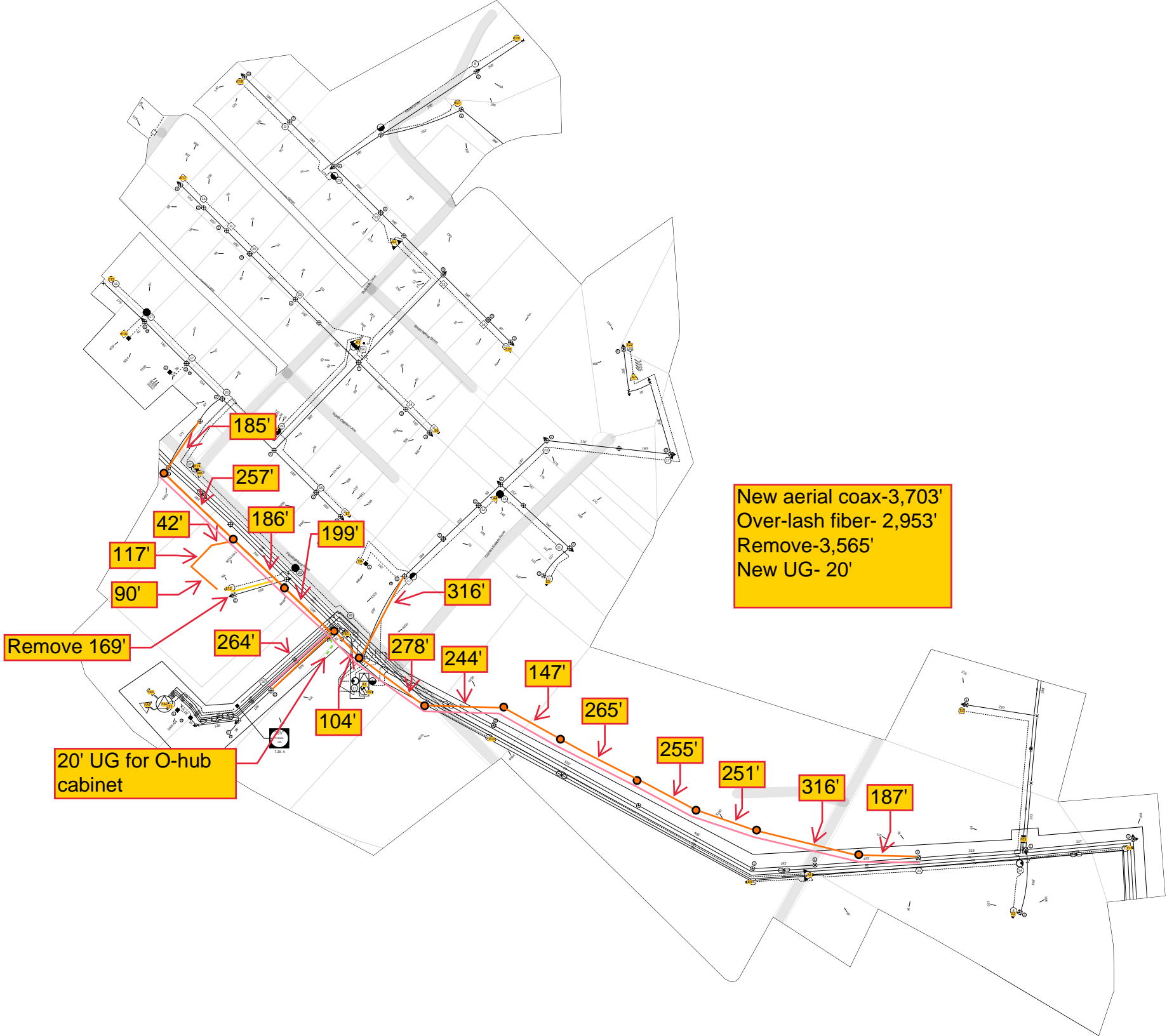
Remove
2 spans

131'

3120 Flemingsburg Rd,
Morehead, KY 40351





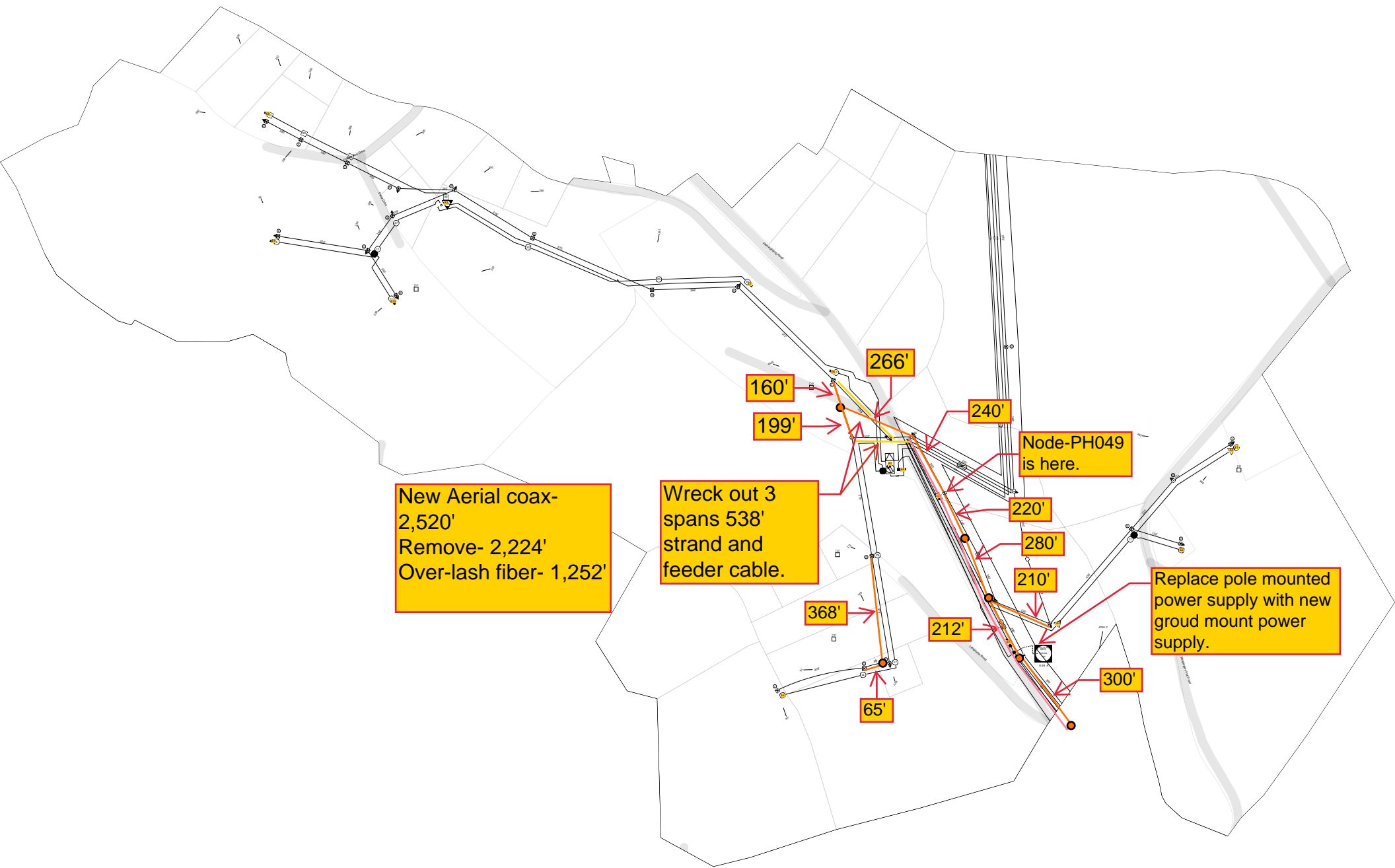


New aerial coax-3,703'
Over-lash fiber- 2,953'
Remove-3,565'
New UG- 20'

Remove 169'

20' UG for O-hub cabinet

- 185'
- 257'
- 42'
- 117'
- 90'
- 186'
- 199'
- 316'
- 264'
- 278'
- 244'
- 147'
- 265'
- 104'
- 255'
- 251'
- 316'
- 187'



New Aerial coax- 2,520'
Remove- 2,224'
Over-lash fiber- 1,252'

Wreck out 3 spans 538'
strand and feeder cable.

Node-PH049 is here.

Replace pole mounted power supply with new ground mount power supply.

160'

199'

266'

240'

220'

280'

210'

368'

212'

65'

300'

New aerial coax-1,842'
Over-lash fiber-1,842'
Remove-1,847'
Replace power supply

Node-PH050

149'

159'

258'

144'

156'

171'

146'

234'

425'

